



# Make ROI Your Focus When Embarking on Your Reliability Journey

High Annual Benefits and Low Stress Are Readily Within Reach



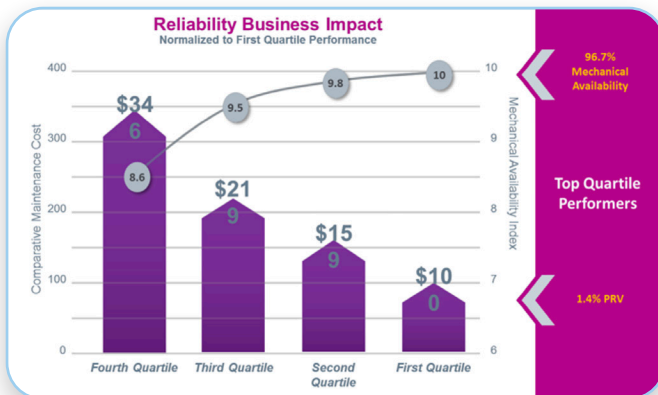
By moving toward First Quartile performance, your plant can achieve:

- Lower Maintenance Costs
- Higher Mechanical Availability (and higher Overall Equipment Effectiveness)
- Lower Safety Injury Rates
- Higher Annual Profit

The key to achieving these benefits?

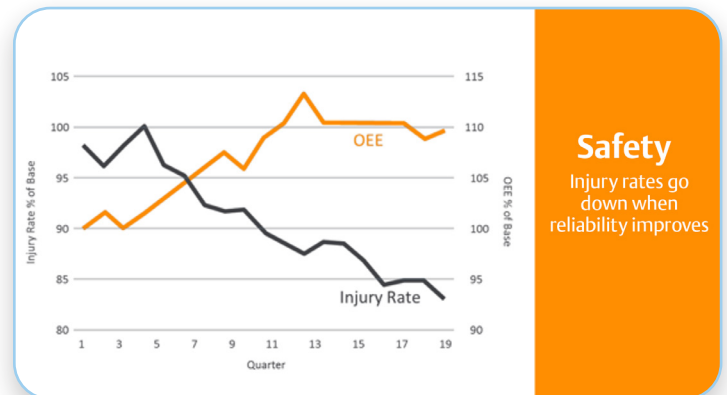
Assessment, Goal-Setting, and an Action Plan

## Gain a Competitive Advantage Over Your Peers and Improve Overall Business Performance With Plant Reliability



Moving toward First Quartile performance with reliability decreases maintenance costs and downtime while increasing process efficiency and speed to production targets.\*

## Imagine How Much Safer Your Plant Could Be With an Improved Reliability Program

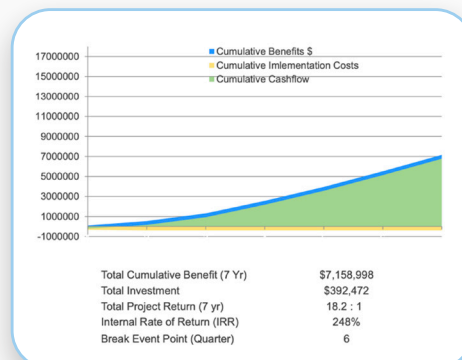


Focusing on reliability greatly reduces the risk of injury and improves Overall Equipment Effectiveness (OEE). Over 5 years, the company in this study\* experienced an approximate 15% Injury Rate drop and a 10% increase in OEE.

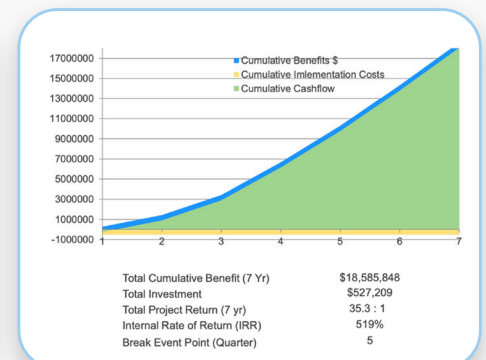
Whether your plant benefits from one of these scenarios (or somewhere in between), investing in plant reliability can yield a high internal rate of return and cumulative benefit—with a break-even in 6 quarters, or sooner.

Do these scenarios resonate with you?

### LOW END SCENARIO

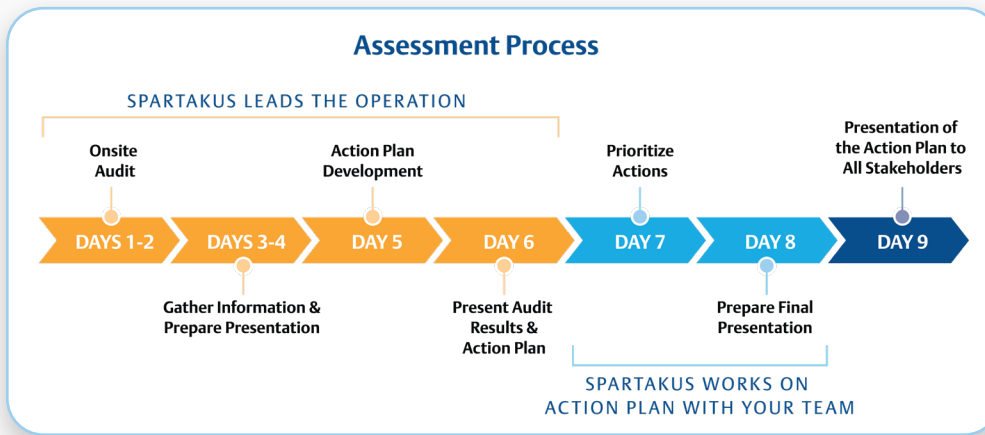


### HIGH END SCENARIO



## Your First Step to Reliability → Our Reliability Assessment

Through interviews with key personnel, analysis of the various processes in place, and available data & tools, our experts will compare your current practices against world-class standards in your industry. Starting with an on-site audit, we will evaluate your current practices and then work with you to establish an action plan.



**At your plant, we will evaluate your current practices by assessing:**

- Asset Master Data
- Work Management
- Asset Health Management
- Inventory Management
- Defect Elimination
- Craft Skills
- Leadership for Reliability

## Learn How to Benefit From Plant Reliability at Our Reliability Workshop

This one-day executive training session is designed to teach Reliability Professionals, like you, how to move toward First Quartile performance—and experience improved uptime, quality, and throughput. This training provides a well-rounded approach—combining theoretical knowledge with practical real-world examples and self-assessments to deliver a valuable experience.

**Is our Workshop for you? If you are experiencing any of these situations, we can help.**

- A site-wide comprehensive reliability initiative is not currently in place
- There is a disconnect between operation and maintenance technicians
- Too many initiatives are being deployed & it's difficult to prioritize where to put the effort

**At the completion of the workshop, you should have a good understanding of:**

- The state of the plant reliability processes currently being deployed at your facility
- The gap between the current state of the plant and the optimal state, and how to close this gap using our benefit analysis



## Sign Up for One of Our Workshops

[eci.us/education/executive-training-reliability-workshop](https://eci.us/education/executive-training-reliability-workshop)

Founded in 1956, ECI specializes in providing best-in-class process control systems, automation products, pumps, and related solutions for manufacturing and industrial customers in the oil and gas, chemical, power, food and beverage, mining and metals, life sciences, pulp and paper, refining, petrochemical, OEM, and nuclear industries. In addition, ECI's experts and certified technicians provide reliability solutions, plant lifecycle services, process solutions, automation, and valve repair services for a wide variety of products. The company is proud to be your local Emerson Impact Partner serving Western Pennsylvania, West Virginia, Western Maryland, and Ohio.



Emerson Impact Partner



ECI.us

724-746-3700

2 Park Drive, Lawrence, PA 15055

\*Sources: 2013 Solomon RAM Study, Solomon Associates LLC; The RM Group, Inc.