

Aspen Enterprise IP.21 Historian™

Evolve Your Industrial Data Foundation to Deliver Enterprise-Wide Intelligence

Aspen Enterprise IP.21 Historian is an enterprise-level data historian that aggregates process data on a large scale in the Cloud from various historians, supporting small and large sites. This data forms the core of Aspen Tech's Industrial Data and AI platform, the AIoT Hub™, enabling enterprises to overcome digitalization barriers and drive greater productivity, efficiency, and reliability in their entire operations.

Key Benefits

Enterprise-Level Visibility

Consolidates and organizes data from all sites—whether small or large, isolated or connected—into a single repository in the Cloud or a corporate data center. Provides the necessary tools and the ability to visualize, analyze, monitor and access enterprise data in real time.

Continuous Data Availability

Eliminates the ripple effect of data loss and the risks involved in performing software or application upgrades. With uninterrupted access to data, users gain a better understanding of business operations over time and identify opportunities to make improvements across the operations.

Highly Responsive & Scalable System

Leverages the resources and capabilities of Cloud technology and provides rapid reallocation of capacity to avoid slow system responses during high-traffic, large user demand situations. Helps the plant avoid service interruption and eliminate downtime.

Key Capabilities

- Highly available, flexible, real-time database
- Non-disruptive and transparent upgrading during maintenance
- Optimal token usage compared to other fault tolerant configurations
- Aggregates data from multiple historians such as Aspen InfoPlus.21® and OSISoft PI
- Supports custom tag definitions

Add-On Capabilities

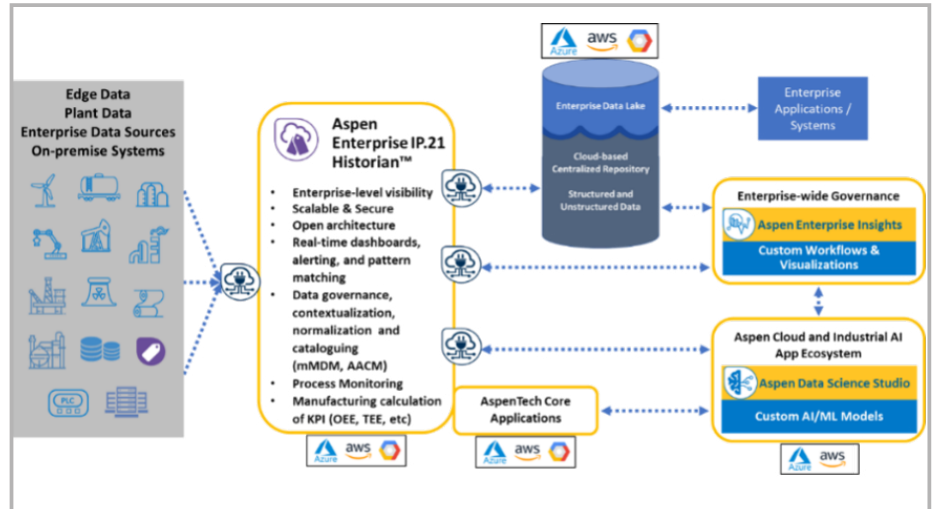
- Web-based visualizations for plant operations using aspenONE® Process Explorer™ to deliver real-time dashboards, alerting, and applications such as pattern matching and Overall Equipment Effectiveness (OEE)
- Supports sophisticated third-party load balancing to deliver a fault tolerant system that redistributes loading transparently
- Supports traditional Aspen IP.21 client applications

Use Case

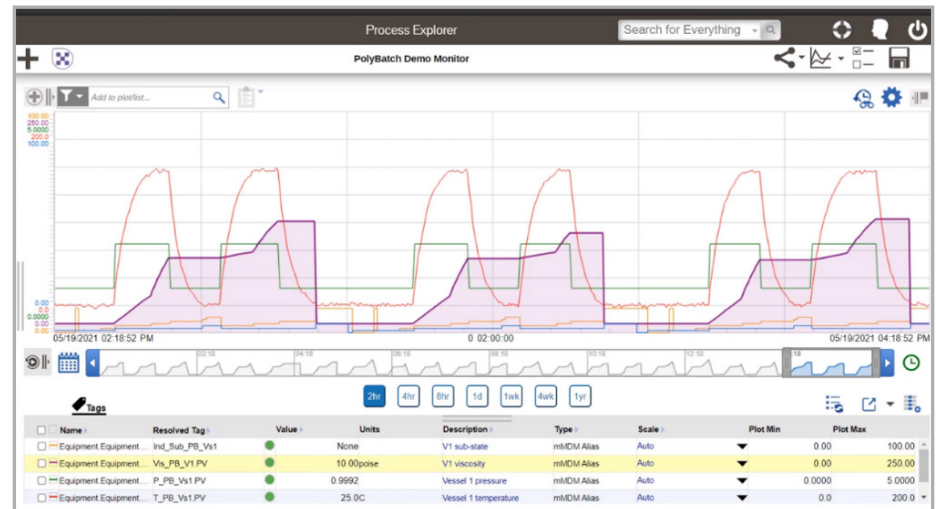
CHALLENGE: A food and beverage company lacks the ability to track batch processes across its geographically distributed sites in real-time to calculate and monitor key Batch and Statistical Process Control (SPC)/Statistical Quality Control (SQC) variables. The company's operators need to be empowered to identify and troubleshoot process issues. They are also looking to reduce variation in operations in different locations.

SOLUTION: Aspen Enterprise IP.21 Historian enables the company to aggregate and manage data from all of its sites and multiple sources, including third party historians or software programs. This means potential tangible gains in roll-ups and comparisons for the business. It can also monitor and share important KPIs while elevating the most urgent alarms with real-time visibility into asset performance across the enterprise.

RESULT: The company is able to consolidate, store and analyze large quantities of data on demand and in real time. In addition, they can rapidly deploy multi-site Batch KPI and SPC dashboards to measure, monitor, and compare productivity and efficiency across different regions. Operators are able to detect problems easily within the process, ensuring that customers receive high-quality products every time. The end result: Increased equipment reliability and decreased production and operating costs.



Aspen Enterprise IP.21 Historian aggregates and manages all available operational data from multiple sources, making it available across the enterprise.



With the help of aspenONE Process Explorer, Aspen Enterprise IP.21 Historian provides comprehensive real-time information on productivity and efficiency across the enterprise for consistent operations monitoring, and analysis.

The Aspen AIoT Hub™ provides the integrated data management, edge and cloud infrastructure, and a production-grade AI environment to build, deploy and host Industrial AI applications at enterprise speed and scale.

Visit [aspentech.com/aiot](https://www.aspentech.com/aiot) to learn more.